



Shaun Harris
0829560599
sales@sitari.co.za



Trix De Waal
0766635812
sales@sitari.co.za

Contact Somerset West

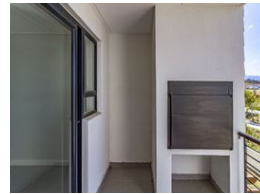
021 2017337

Sitari Property Sales
Sitari Country Estate
Old Main Rd
Somerset West
7130



SOLE MANDATE

Web Ref 6951111



R1,825,000

Monthly Bond Repayment R18,837.44
Calculated over 20 years at 11% with no deposit.

Transfer Costs R64,706.00 **Bond Costs** R32,760.00

These calculations are only a guide. Please ask your conveyancer for exact calculations.

Monthly Levy R3,297 **Monthly Rates** R514



Never Been Lived in, First Floor Unit – The Grove

This stunning, brand-new unit is situated on the first floor of The Grove, offering modern living in a prime location. Perfect for first-time buyers or those looking to downsize, this unit provides a comfortable and stylish living space.

Key Features:

2 Bedrooms: Spacious and well-lit, with plenty of room for relaxation and rest.

1 Full Bathroom: Featuring modern fixtures for your convenience.

Spacious Lounge: A large living area that's perfect for entertaining or enjoying downtime.

Well-Equipped Kitchen: Includes a double sink, ample cupboard space, and room for all your culinary needs.

Covered Patio: One of the bedrooms leads out to a private covered patio, ideal for enjoying fresh air in comfort.

Parking: Includes 2 parking bays for your convenience.

This unit is a blank canvas ready for you to move in and make...

Features

Interior

| | |
|--------------|---|
| Bedrooms | 2 |
| Bathrooms | 1 |
| Kitchens | 1 |
| Recep. Rooms | 1 |

Exterior

| | |
|---------------------|----|
| Carports / Parkings | 2 |
| Security | No |
| Pool | No |

Sizes

| | |
|------------|------------------|
| Floor Size | 73m ² |
|------------|------------------|

